

SOHO HOME



## Arcus Rug Grey Blue, 170 X 240cm

£1,895 Regular

£1,611 Membership

### Sizes

300 x 420cm, 170 x 240cm, 200 x 300cm, 270 x 360cm, 20 x 30cm (Swatch)

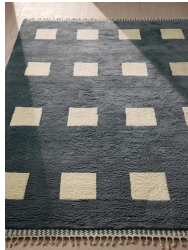
### Product details

Hand-knotted by a community of artisans in India, the Arcus rug is made from New Zealand wool for a warm and extremely soft finish. The repetitive square pattern of this rug takes influences from the architectural shapes and colour palette of Soho House Rome, which has been designed in-house.

### Dimensions

Product dimensions: H170 x W240 x D2cm / H5'7" x W7'10" x D1"

Product weight: 14kg / 30.9lbs



## Details

Care instructions: Vacuum regularly on a low-power setting, using a vacuum cleaner without a beater brush, to prevent debris from settling into roots of the fibres. For best results, vacuum from different directions, making several passes over the area. Shedding is a natural characteristic of the handmade rugs which reduces over a period of usage. Avoid direct and continuous exposure to sunlight. Use rug protectors under the legs of heavy furniture to avoid flattening piles. Do not pull loose ends. Clip them with scissors to remove.

Turn carpet around occasionally to equalise wear.

Remove spills immediately; if liquid, blot with clean, un-dyed cloth by pressing firmly around the spill to absorb as much as possible. For hard-to-remove stains, professional rug cleaning is recommended.

Store your rug by rolling it front side out and wrapping in cloth for protection. Do not fold or store rug in an airtight plastic

bag. Place in dry, well-ventilated area. Use of a rug pad is recommended

Composition: Pile: 100% Wool; Base: 98% Cotton, 2% Polyester; Overall: 50% Wool, 49% Cotton, 1% Polyester

Construction: Hand Tufted